

ALT-1

SL NO	SHUNT SIG. NO.	RELEASED BY SH. SIG. AHEAD
1.	5	8
2.	6	8
3.	7A	8
4.	8B	11
5.	8C	12
6.	8D	13
7.	62	60
8.	63	60
9.	64	60
10.	65	60
11.	66	60
12.	67	60
13.	68	60
14.	69	60
15.	70	60
16.	71	60

## TOLLYGUNGE CAR SHED

SL. NO.	TRACK SECTION	DP NUMBERS		RESETTING TYPE	PLACEMENT OF		INDICATION		COOPERATION WITH STN FOR RESETTING
		FROM	TO		RESETBOX	LVBOX	OCC	CLEAR	
1.	TS 021	DP-21	DP-21	MANUAL(hard)	PANEL ROOM	LV-1	R	G	---
2.	TS 022	DP-22	DP-22	MANUAL(hard)	PANEL ROOM	LV-1	R	G	---
3.	TS 023	DP-27	DP-27	MANUAL(hard)	PANEL ROOM	LV-1	R	G	---
4.	TS 024	DP-28	DP-28	MANUAL(hard)	PANEL ROOM	LV-1	R	G	---
5.	TS 025	DP-29	DP-29	MANUAL(hard)	PANEL ROOM	LV-1	R	G	---
6.	TS 026	DP-30	DP-30	MANUAL(hard)	PANEL ROOM	LV-1	R	G	---
7.	TS 027	DP-31	DP-31	MANUAL(hard)	PANEL ROOM	LV-1	R	G	---
8.	TS 028	DP-32	DP-32	MANUAL(hard)	PANEL ROOM	LV-1	R	G	---
9.	TS 029	DP-26	DP-26	MANUAL(hard)	PANEL ROOM	LV-1	R	G	---
10.	TS 31	DP-17	DP-18/DP-19	MANUAL(hard)	PANEL ROOM	LV-1	R	G	---
11.	TS 32/35	DP-18	DP-20/21/22	MANUAL(hard)	PANEL ROOM	LV-1	R	G	---
12.	TS 33/36/37	DP-19	DP-23/24/25/26	MANUAL(hard)	PANEL ROOM	LV-1	R	G	---
13.	TS 38	DP-25	DP-31/DP-32	MANUAL(hard)	PANEL ROOM	LV-1	R	G	---
14.	TS 40	DP-24	DP-29/DP-30	MANUAL(hard)	PANEL ROOM	LV-1	R	G	---
15.	TS 41	DP-23	DP-27/DP-28	MANUAL(hard)	PANEL ROOM	LV-1	R	G	---
16.	TS 062	DP-20	DP-20	MANUAL(hard)	PANEL ROOM	LV-1	R	G	---

SL. NO.	TRACK SECTION	DP NUMBERS		RESETTING TYPE	PLACEMENT OF		INDICATION		COOPERATION WITH STN FOR RESETTING
		FROM	TO		RESETBOX	LVBOX	OCC	CLEAR	
1.	TS-05	DP-11	DP-10	MANUAL(hard)	PANEL ROOM	LV-2	R	G	---
2.	TS-06	DP-13	DP-4	MANUAL(hard)	PANEL ROOM	LV-3	R	G	---
3.	TS-07	DP-14	DP-3	MANUAL(hard)	PANEL ROOM	LV-3	R	G	---
4.	TS-24	DP-14	DP-15/DP-16	MANUAL(hard)	PANEL ROOM	LV-2	R	G	---
5.	TS-28/29	DP-17	DP-11/13/15	MANUAL(hard)	PANEL ROOM	LV-2	R	G	---
6.	TS-061	DP-16	DP-16	MANUAL(hard)	PANEL ROOM	LV-2	R	G	---

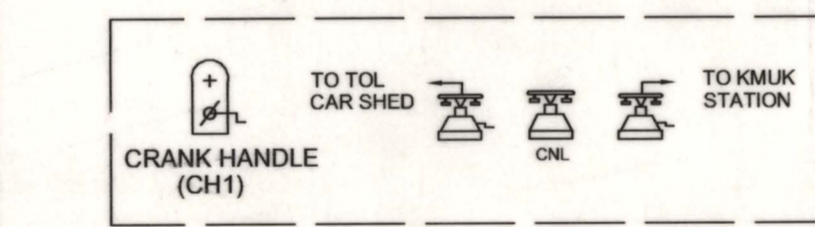
PANEL:-  
POINT CONTROL BUTTON

SHUNT SIGNAL BUTTON:-5,6,7,8,11,12,13,60,61,62,63,64,65,66,67,68,69,70,71  
POINT CONTROL SWITCH:-24,28,29,31,32,33,35,36,37,38,40,41  
CRANK HANDLE CONTROL BUTTON:-CH1  
SLOT SWITCHES:-75,76,77  
ROUTE CANCELLATION BUTTON:-01 No.  
POWER ACKNOWLEDGEMENT BUTTON:-01 No.  
BUZZER MUTING BUTTON:-01 No.  
SM'S KEY:-01 No.  
POINT GROUP BUTTON NORMAL-1 No.  
POINT GROUP BUTTON REVERSE-1 No.

SPECIAL INSTRUCTIONS / APPROVED SPECIAL INSTRUCTIONS					
SL. NO.	INSTRUCTIONS	AUTHORITY	ISSUED BY	DATE	REMARKS

ALT.NO.	DESCRIPTION	REFERENCE	CHECKED				APPROVED		DATE OF COMM.	CRS SANCTION NO. & DATE
			SSE/DRG./S&T	SSE/S/PLG	ASTE/C	SSTE/PLG	f C S T E	f COM		
1.	ALTERATION IN CONNECTION WITH REPLACEMENT OF POINT OPERATION SWITCHES BY POINT BUTTONS.		Shamabarty 20/11/18	Sham 3/12/18						

- CONTINUOUS AXLE COUNTER & INTER SLOTTING BETWEEN TOL RRI & KMKU STN.
- SIGNALS, POINTS, AXLE COUNTERS OF TOL RRI ARE SHOWN IN ONE DIGIT OR TWO DIGITS NUMBERS.
- SIGNALS, POINTS, AXLE COUNTERS OF KMKU STN. ARE SHOWN IN FOUR DIGITS NUMBERS WITHIN BRACKETS.
- ENTRY INTO TOL CARSHED FROM KMKU STN. REQUIRE SLOT 75 THROUGH LINE NO. 1, SLOT NO. 76 THROUGH LINE NO. 20 & SLOT NO. 77 THROUGH LINE NO. 21.
- MAGNETO BLOCK PHONE WITH KMKU STN., CARSHED SUPERVISOR OFFICE & CONTROL TELEPHONE ARE PROVIDED AT TOL RRI.
- ANY OF THE LINE BUTTONS L-4, L-5, L-6, L-7, L-8, L-9, L-10, L-11 ALONG WITH OPERATE BUTTON ARE TO BE PRESSED BY CARSHED SUPERVISOR FOR NOMINATION OF THE CONCERNED LINE FOR ADMISSION OF TRAIN. FOR CANCELLATION, THE CANCEL BUTTON ALONG WITH RESPECTIVE LINE BUTTON ARE TO BE PRESSED.
- MSDAC HAS BEEN PROVIDED IN THE TOL CARSHED FOR DETECTION OF TRAIN.
- UNCONDITIONAL HARD RESETTING ARRANGEMENT HAS BEEN PROVIDED FOR RESETTING OF TRACK SECTION.
- RESETTING OF TRACK SECTION CAN BE DONE AFTER LINE VERIFICATION AND THEN TURNING OF KEY OF CONCERNED TRACK SECTION LV BOX SIMULTANEOUSLY LOCATED AT DIFFERENT PLACES.
- ANGLE OF CROSSING SHOWN IN LAYOUT.
- ROUTE INITIATION INDICATION HAVE BEEN PROVIDED ON THE PANEL.
  - FLASHING - ROUTE INITIATED BUT NOT YET SET.
  - STEADY - INITIATED ROUTE IS SET AND LOCKED.



KM 16.959  
RRI CABIN

KM 16.450  
MAHANAYAK UTTAM KUMAR

UP PLATFORM 171.5M

DN PLATFORM 171.5M

BASED ON ESP No. MRC/W/S-STR/3RD PLATFORM & YARD/TOLLY/02-2015  
THIS DRG. SUPERSEDES DRG.No. SIP.0027(CS)/30 ALT-2

METRO RAILWAY KOLKATA	APPROVED		CHECKED		PREPARED	CRS SANCTION No.	SCALE		TOLLYGUNGE CAR SHED	DRG. No.:-
	For COM	For CSTE	SSTE/PLG	ASTE-C	SSTE/PLG		LONGITUDINAL:- 1 : 1000	SIGNAL INTERLOCKING PLAN STD. - I(R)		
	20/11/18	20/11/18	20/11/18	20/11/18	20/11/18	DATE:	TRANVERSE:- 1 : 500			0027(CS) SIP 32